



OMEEO REGION NEWS SHEET



Wednesday 9 April 2025

AN OMEOSHIRE LIONS CLUB PROJECT

20 cents

SERVING ENSAY, SWIFTS CREEK, OMEEO. BENAMBRA, DINNER PLAIN.

NEWSHEET ENQUIRIES:

Email: newsheet@omeo.org.au
Phone : 5159 1515 www.omeo.org.au
Post: P.O. Box 182 Omeo 3898

Medical Services-Omeo Region

For **URGENT** Medical Care call **000**
Omeo Medical Centre

Please Phone: **51 590 140**

To arrange an appointment

Monday to Friday 8.00am—5.00pm

Pathology: Collection Monday to Friday

8.00 am—9.00am

by appointment only

OMEEO COMMUNITY HUB

LUCKY NUMBERS

6... Ann Petersen

18...Grant&Donna

SNAPDRAGONS JOKE

Napoleon was on the high seas when 10 English ships appeared on the horizon so he called for his red coat. The French annihilated the 10 ships. Later that week 25 English ships appeared on the horizon.

The cabin boy came up to Napoleon after they had wiped out the 25 ships and asked why he had put on his red coat. Napoleon answered: My boy. I put on the red coat so that if I get hit the crew wont see the blood.

Soon after there appeared 130 English ships on the horizon and Napoleon barked out the order: Cabin Boy, bring me my brown trousers!!

APRIL WEATHER 9th-16th



District Diary

Wednesday 9th April

Omeo to Bright Bus..departs Omeo 8.30am return 3.30pm
Lego Club Omeo Library.....3.30pm-4.30pm

Thursday 10th April

Omeo Opportunity Shop Open..... 11.00am-3.00pm

Friday 11th April

Omeo to Bright Bus...departs Omeo 8.30am return3.30pm

Saturday 12th April

AA. meeting 1st Saturday of month, CFA rooms2.00pm
Omeo Opportunity Shop Open..... 11.00am-3.00p

Sunday 13th April

Anglican Church Omeo..... 11.00am
Catholic Prayer Meeting Omeo
Golf Comp 12.00pm

Monday 14th April

Omeo to Bright Bus depart...Omeo 8.30am return3.30pm
The High Country Singers Omeo Shire Offices.....2-3.30 pm
Solicitor Jesica Ward at Octagon Bookshop

Tuesday 15th April

Listen with Lorna live radio O.S.C.A.R. fm ... 12.00-2.00pm

NB Only those who will risk going too far can possibly find out how far one can go.

Amicus.



Medical Centre

Charles Luiz

&

Howard Goldenberg



Please note some days are via telehealth
Phone:5159 0140



Darren Chester
Federal Member for Gippsland



**Shopping
Locally**

Creates Local Jobs
#lovegippsland

1300 131 785

www.darrenchester.com



OMEOPHARMACY
SPEAK TO YOUR LOCAL PHARMACIST

186 Day Avenue. Omeo. 3898

PH: 03 51591663 FAX: 03 5159 1686

EMAIL: omeopharmacy@gmail.com

DELIVERY AVAILABLE



R.E.C. 17886

MITCHELL
Electrical Services

INDUSTRIAL — DOMESTIC
ELECTRICAL MOTOR REPAIRS

CONTACT: TOM MITCHELL

5157 3200 — 0428 573 205

"From The Lakes To The Alps"

Skicom Mt Hotham

CARPET/UPHOLSTERY/MATTRESS CLEANING SERVICE

Scott DeVries

0429 723 274

scottdevries2@icloud.com



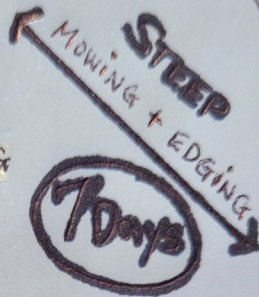
STUBBORN DIRT, GRIT, STAINS, PET ODOUR, ALLERGENS... BE GONE!

TREE TRIMMING
HEDGE TRIMMING
GUTTER CLEANING
STUMP GRINDING

FREE QUOTES

Ph: GARY 0427772634

email: garysmaintenance@gmail.com



Fresh Air Cafe

Will be closed from the end of business

Friday 2nd May 2025 to reopen on

Monday 19th May 2025.

Sorry for any inconvenience to you all.

Thanks Pauline.

SWITCH RECYCLING BOUTIQUE

157 Day Avenue Omeo

Next to the Post Office

Open 7 days 9.00am to 5.00pm

IN STOCK, HUGE RANGE OF NEW
TRENDY DRESSES AVAILABLE ...

GET IN EARLY-ALSO IN STOCK JUMPERS/
JACKETS/ JEANS/ TOPS/ SKIRTS/ MENS

SHIRTS/ JUMPERS// SHOES/ BOOTS/

HATS & JEWELLERY..

COME IN FOR A BROWSE..



Free Flu vaccinations available now for
65 and overs, and for kids under 5 years

of age at Swifts Creek Bush Nursing
Centre. All age groups available from

Monday 7th April.



OMEO • BAIRNSDALE • MALLACOOTA • MELBOURNE

**Daily Services between
Melbourne - Bairnsdale - Omeo**
Bairnsdale Depot - Grinters Transport,
16 Lawless Street, Bairnsdale, 3875

Melbourne Depot - Vic Freight Specialists, 13B,
13-17 Progress Street, Dandenong, 3175

Omeo Depot – Omeo Welding & Engineering &
Equipment Hire, 87 Bilton Street, Omeo, 3898
Phone: (03) 5152 5778 Fax: (03) 5152 3329

Mobile: 0418 516 857

Email: admin@grinters.com.au

- ◆ Pallets . Parcels .
- ◆ Livestock . Hay .
- ◆ Machinery . Bulk
- ◆ General . Wool
- ◆ Refrigerated Freight . Farm Equipment

Leaves 9.30am from Bairnsdale to Omeo



Jens and Maureen Hudson

18 Great Alpine Road Lucknow 3875
Phone Maureen 0402 001 593
Jens 0402 006 268

Many fabrics to choose from for all your
furnishing needs. Over thirty years in
Business and 76 years' experience in the
industry, between us we can help you.

Including car and motorbike seats

- Car roof linings replaced
- Cushions made to size
- Foam cut to size
- Toyota Land Cruiser seat foams



- Groceries
- Meat
- Fruit & Veg
- Gas Bottles
- Bottle Shop
- Post Office

- Fuel ULP & DSL + Winter Mix
- Breakfast & Lunch Daily until 2pm
- Fish & Chips - Friday Nights 4pm-7pm
 - Eat In or Take Away
- Personalised Weekly Orders of Meat, Fruit &
Vegetables

Drop in and meet our awesome team to grab a
bite to eat or stock up on supplies for your
adventure around Sunny Benambra

TRADING HOURS

Weekdays 8am - 5:30pm

Weekends 9am - 5pm

Public Holidays 9am - 5pm

03 5159 9209



Bore pumps Sales and servicing,
Mains and solar operated

TV Installation and servicing of both
Satellite & "Terry"

Generator - Sales/Hire/Installation/

Mains to Generator
changeover switches and inlets

Electrical Appliance Repairs/Maintenance

Electrical Installations
Industrial to domestic..

Competitive rates
and servicing the Omeo region

Contact Jeremiah on 0418 909 978

EAST GIPPSLAND
SHIRE LIBRARIES



LEGO CLUB 2025



Junior LEGO enthusiasts are invited to attend our after- LEGO Club school sessions.

The sessions incorporate freestyle activity and themed construction activities.

Donations Welcome

The library will gladly accept donations of old or new LEGO brand pieces for our LEGO Club collection.

For more information, phone **51524225** or ask in person at the library about these **FREE** sessions.

Omeo Service Centre

3.30pm-4.30pm

Every Wednesday

Except School Holidays



All Children must be accompanied by an adult



FARMGATE

Agribusiness Finance

FARMER FIRST APPROACH

"Your trusted partner in rural and agricultural finance"

OUR SERVICES INCLUDE:

- Farm Loans
- Seasonal Finance
- Livestock Finance
- Equipment Finance
- Annual Bank Reviews
- Housing Loans

Cameron McPhan

Phone: **0439 388 808**

cameron@farmgateagrifinance.com.au



ALL SCREENS GIPPSLAND

SALES - SERVICE - REPAIRS

GLASS & GLAZING –

WINDOW REPLACEMENTS

– SHOWER SCREENS – ROBE DOORS –

SECURITY DOORS – FLY SCREENS &
MORE

Servicing - Ensay, Swift Creek, Omeo,
Benambra & Dinner Plain

OFFICE: 5152 6791

JUSTIN: 0457 775 168

emailsales@allscreensgippsland.com.au

www.allscreensgippsland.com.au

Mark Trafford **TRAKERS** 0428 264 480
13 Jobling Street **TRANSPORT** mark@tectronix.com.au
Bethanga Vic 3691
ABN: 13 946 732 134 **&**
WATER CARTAGE

Specialising in the following services

Potable Water Cartage

Transport of general freight, Agricultural goods,

Motorbikes, Quad bikes, Mowers

Small tractors, SXS's, Machinery parts,

Bagged grain and much more.

Reasonable rates

Truck equipped with 1,000 KG. tailgate loader

Full tarpaulin if required,

ability to load and unload goods

with 1.6 tonne all terrain pallet jack.

Truck capabilities: 6.tonne, 4x4

Tray size: 5.5 mtrs x 2.4 mtrs.

Flat top trailer 6.3 mtr x 2.5 mtr

Transporting weekly to Omeo and district

from Albury/Wodonga Corryong

Orders phoned or emailed by Tuesday

11 am For delivery on Wednesdays

Contact Mark for delivery charges on

0428 264 480

Mark@tectronix.com.au

School Holiday Activity

Paint A Planter Pot

AGES 5-12



Head into your local library for some school holiday fun! Come ready to listen to stories, play games, win prizes and paint your own planter pot then make your own felt bird bookmark!
*Pot designs may vary, plants not include

Omeo Service Centre
Wednesday 9 April 2.00 pm - 3.30 pm
Book now at your library Phone 5152 4225

Easter Craft Activity

Easter Basket and Magnet

AGES 5-12



Hop into your local library this Easter! Come ready to listen to a story and get creative with a DIY paper Easter basket and Easter egg magnet craft!

Omeo Service Centre
Tuesday 15 April 2.00 pm - 3.00 pm
Book now at your library Phone 5152 4225

SUBSCRIBERS PLEASE NOTE

www.omeo.org.au/newssheet
Phone : 5159 1515

All articles for the newssheet to be in by **12.00 noon on the Monday** before publication.

On sale Wednesday.

Prices for Newssheet are as follows:

Full Page A4 \$40.00

1/2 Page \$20.00

1/4 Page \$10.00

1/8 Page \$5.00



Please state what size you require & how long/dates you would like it advertised for.

Tech Savvy Workshop

Online Buying and Selling



Omeo Service Centre
Monday 14 April
9.30am—12.00pm

Learn all about online shopping! This workshop provides basic information on how to buy and sell items on the internet. It is suitable for computer, tablet and smartphone users.

Content: Researching products and suppliers
Payment methods Navigating eBay Popular shopping website recommendations

FREE BOOKINGS ESSENTIAL
Book now at your library 5152 4225
www.trybooking.com/eventlist/

NEW RUSH BREWHOUSE

Opening Hours

Friday from 5pm
Sunday Breakfast 8am 12pm
Sunday Lunch 12- 2pm

Phone :5159 1276



Our first edition in March 2024 was submitted in the Victorian Local History Awards of 2024 and recently the prizes were announced.

We were awarded a commendation, CONGRATULATIONS to the editor Debra Squires and other Omeo Historical Society members who assist and contribute.

Issue no 5, March 2025 and all other issues are available in print from: \$8 per copy.

- *Swifts Creek Bakery
- *Benambra Store
- *Fresh Air Cafe, Omeo
- *Post Office, Omeo
- *Golden Age Hotel.

Electronic subscriptions are \$20 per year and will include any special editions at no extra cost. Two are expected this year. email: omeohs@gmail.com

No. 1 MARCH 2024



Registered Nurse from Swifts Creek Bush Nursing Centre will be visiting Benambra Neighbourhood House each month, **Starting from Thursday 13th March, 2025.**

Please come anytime between 8am and 3pm or make a booking (phone number below). Services available include blood pressure checks, blood sugar monitoring, cervical screening self-collection, telehealth, social emotional support, and assistance with accessing services. All available free of charge. Wound care and suturing – small fee
Pathology collection available between 7am and 8am.

Bookings for Pathology are essential.

Ph. 03 5150 2430



OMEO COMMUNITY HALL AND HUB EASTER MARKET

If you would like to donate goods for sale and the funds to go to the Hall's upgrade, please leave items in the foyer on the table.

We would be most appreciative of any donation of saleable goods.

Late notice : 1 stall in the Hall is now available for the Sat & Sun

Contact : 0427191223 or email omeocommunityhub@gmail.com

if you're interested.

**LYREBIRD PLANT NURSERY
AND GARDEN SUPPLIES**

**35 HANKSHAW'S HILL ROAD OMEO –
Last house on the left.
OPEN SATURDAY & SUNDAY 10-4PM**

Or anytime by appointment.



Our hot weather will be over soon enough so why not get a head start and have some plants on hand for Autumn planting, the perfect gardening Season! Visitors are welcome to wander through the Nursery garden and purchase stock. Established potted colour, Native shrubs, small trees, indoor plants and succulents. Range of bagged potting mix available.

CASH ONLY OR DIRECT DEPOSIT

Please call Kell J
0438 373 789



OMEQ PRIMARY SCHOOL IS

Looking For a Cleaner

Hours: 15-20 per fortnight

**EXCELLENT RATE OF PAY –
well above award**

Cleaning needs to be done regularly Monday to Thursday with the option of cleaning on the weekends.

All cleaning products and equipment will be provided.

All applicants will require a Working with Children Check - employee not volunteer. Holiday times will require a deep clean of the school or coordination of services to do the clean.

If you are interested in this position, please contact Andrea Shepherd-Business Manager or Tracey Rendell Administration on **5159 1313** between the hours of 8.30am and 4.30pm or drop into the school and ask at the main office.

EAST GIPPSLAND
SHIRE LIBRARIES
FREE | BOOKINGS ESSENTIAL



April School Holiday Movie



Join us these School Holidays for a fun movie screening! Looking for something fun to do these school holidays? Come into the library for a free family friendly movie screening! Parents/carers are required to accompany their children.

Omo Service Centre
Thursday 17 April
2.00pm—4.00pm

Book Now
5152 4225

For specific film information, ask in library.



EAST GIPPSLAND
SHIRE LIBRARIES
FREE | NO BOOKINGS REQUIRED | AGES 5-12



Video Games & Board Games



Get your game on! Join us for fun with the Switch/Xbox and board games! Enjoy free game time for kids ages 5–12. Parents are encouraged to stay with younger children.

This is not a supervised event

Omeo Service Centre
X Box Available
Monday—Friday during school holidays
9.00am—5.00pm



**Call for Expressions of Interest: North East CMA
Upper Mitta Mitta Waterways Incentives Due 22 April 2025**

The North East Catchment Management Authority (CMA) invites landholders and community groups in the Upper Mitta Mitta catchment to submit Expressions of Interest for works to protect and enhance waterways and wetlands.

[Download more information on the Upper Mitta Mitta Waterway Incentives Website](#)

Who Can Apply:

- Individual landholders
- Community groups with management rights over private and/or public land
- Must be within the North East Catchment.

Eligible activities:

- Fencing to manage stock access
- Off stream water points
- Weed control
- Revegetation

Application Process:

- 1 Submit your EOI form **by 22 April** [Download EOI \(Word\)](#)
 - 2 Forms can also be picked up at Omeo Rural and Hardware
 - 3 Preliminary assessment by North East CMA staff.
 - 4 Site inspection for eligible applications.

CMA staff work with landholder to map, cost and submit project application. Evaluation based on ecological value, proposed activities, and value for money. Priority will be given to landholders with riparian lands or lands adjacent to priority waterways and wetlands.

For more information, visit the North East CMA website www.necma.vic.gov.au or contact Owen Davies at Owen.davies@necma.vic.gov.au or call 1300 216 513.



OMEO GOLF RESULTS

Wednesday Twilight 02/04/25			Sunday 06/04/25	
9-hole Stableford - start 4.30pm			18-hole Stableford-11.30 for 12 start.	
Place	Points	Player	Points	Player
Winner	18	Dean Jobling	31	Darren Hayward (Rock)
2 nd	17	Trent Heesom	30	Christine Faithfull/ Pat McCormack
3 rd	16	Phil Chapman/ Andrew Cogger	29	Dean Jobling/ Walter Bower
NAGA	8	Steve Squire	19	Shelley Beaton
Nearest pin 7th	-	Phil Chapman	-	Darren Hayward (Rock)
Nearest pin 16th	-	-	-	Dean Jobling
2 nd Shot nearest 6 th	-	Daryl Shepherd	-	Steve Thomas

02/04 was the last Wed. Twilight competition as daylight saving ended.
An "Eclectic Record" was kept (the best score per hole per player for all Weds.)

Winners 32 points - Lorna Peterson & Daryl Shepherd

Second 31 points - Leigh Fulton

Sunday comps continue. 11.30 for 12noon hit-off...all welcome



Ensay Bush Nursing Centre

T. 03 5150 2416 F. 03 5150 2419

email: ensaybnc@gha.net.au



Open 9am until 3pm Monday to Friday

or 8.30am-9am and 3-3.30pm emergencies only

5 Great Alpine Road
Ensay, VIC. 3895

Nursing services: No cost No appointment required.

Pathology Monday to Friday 9 am until 10.30 am- No cost. No appointment required

Footcare: Approximately 6 weekly, \$15.00 cost ring for an appointment

Walk and morning tea: 1st Friday of each month may include some craft activities, no cost only delicious homemade cakes etc.

RFDS mental wellbeing: Fortnightly face to face and telehealth model.

Memberships: \$50.00 family and \$25.00 single due 31st of July each year, pro-rata payments accepted for new members.

AGM: Occurs on the second Monday of October all welcome, new members to the COM welcome.

Follow us on facebook and our webpage for events and employment opportunities.

WEBPAGE

<https://www.ensaybushnursing.com.au>

HILLTOP HOTEL OMEO

Staff wanted.

*Hilltop Hotel is hiring. We require a chef/cook
for 20-25 hours a week.
Sunday to Wednesday.*

Commencing at 4.30.

Casual staff also required for cleaning/ bar and kitchen.

*Please contact the Hilltop Hotel on 51591303
and leave a message. We will return your call.*

Gary & Mandy Peterson





Dear Community Member,

Join hundreds of community organisations around Australia

Are you running a local community organisation, support service, club or group? Want to be found by more people online & to promote your events and services?

The East Gippsland Shire Council is excited to partner with My Community Directory to provide you with your free local Community Directory + Diary.

The East Gippsland Community Directory + Diary can help you to:

- List your services
- Advertise for volunteers
- Promote upcoming events
- Be found by more people online

All for free!

Why should you be a part of it?

- Be part of the largest health and community network in the East Gippsland local government area
- Make sure that people can find you online
- Enable the community to connect to support services in your area
- Increase access to the service you provide
- Increase your searchability and online engagement
- Find and connect with other organisations
- Control your information and listing



What do you need to do?

List your Service/Organisation

Visit My Community Directory to register and create your listing.

Download the My Community Info app

To use this great service on your mobile, download the 'My Community Info' app from the app store or by texting 'East Gippsland' to 0488 884 151 to receive a download link. At the moment we don't have a listing for you and we'd love you to create one and be included!



MyCommunity Directory

Looking for health and support services, community groups, clubs or facilities? Find out what's in our area.

[➤ Read More](#)

[➤ Register](#)

MEN'S HEALTH NIGHT

Heart Health
Mental Health
Prostate Awareness

7th May 2025
at 6.00pm
@ SCBNC



Call the Swifts Creek Bush Nursing Centre
on 5150 2430 to register, Partners are welcome!
Heart Healthy Food provided, it is Heart Health Week!

AS REAL AS IT GETS

SUNDAY 20 APRIL TAMBO VALLEY CUP

- COURTESY BUS TIMETABLE -

OMEQ: 11.00am Golden Age Hotel via Hilltop Hotel

BENAMBRA: 11.00am Benambra Hotel

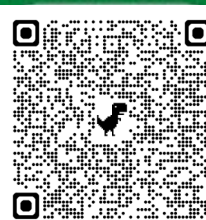
ENSAY: 11.00am Little River Inn

SWIFTS CREEK: 11.45am SC Caravan Park via SC General Store

BINDI: 11.45am Tambo Valley Golf Course

Returns after last race

**LOCALS
DISCOUNT**



On Sunday 20 April, the Tambo Valley Cup is as real as it gets! Kick back at the picnic races and enjoy live entertainment, Fashions on the Field, Kelly Sports kids activities, an Easter Egg Hunt, and the famous Ricky's Rooster Crow competition! PLUS all the up-close, racing action. Gates Open from 11:30am. Races start from 1pm.

All enquiries to tvrc1896@gmail.com

BOOK ONLINE NOW: COUNTRY.RACING.COM/TAMBO-VALLEY

General Admission \$20 PP

**Members Marquee \$100 PP
10-18yrs \$60 PP**

(Includes entry, two course lunch, private bar and racebook)

Courtesy Buses from Benambra, Omeo, Ensay, TV Golf Course and Swifts Creek.



CONNECTING CARERS IN THE COMMUNITY

Paynesville Neighbourhood Centre (PNC) is hosting short workshops across East Gippsland and is coming to Swifts Creek.

**PLEASE NOTE
CHANGE OF DATE**

Refreshments & transport provided

Empowering Women - 14th April

- Managing Stress
- Building Confidence
- Health, Safety & Wellbeing

Money Matters - 15th April

- What type of spender are you?
- Explore goals and budgeting tips for wiser spending
- Planning for your financial future

If you require transport to/from Omeo, please advise when registering.

The Connecting Carers activities are open to anyone that provides unpaid care/support to a family member, friend or neighbour. Feel free to bring along a friend or family member.

WHEN:

Monday 14th April 2025

12pm - 3pm

Tuesday 15th April 2025

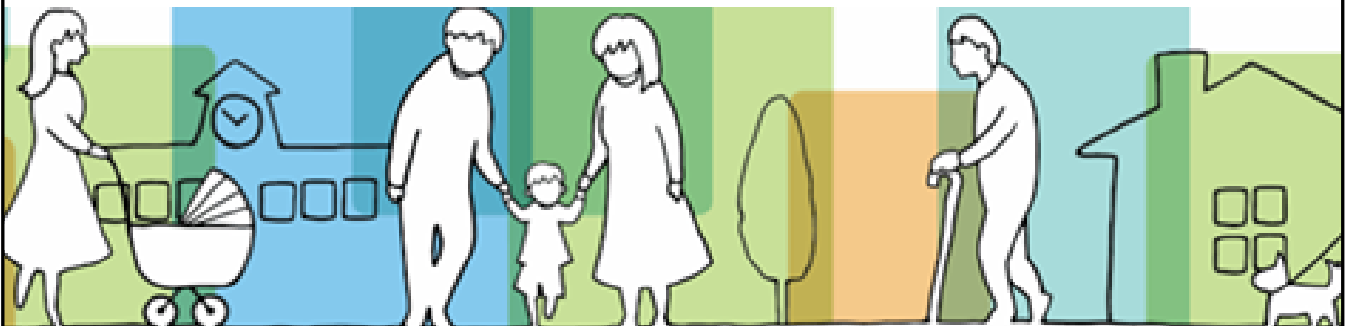
9am - 12pm

WHERE:

Community Centre
Swifts Creek

Registration essential for catering and transport purposes

To register contact Leanne on 0491 697 298



Seasonal Stocktake Session Wednesday 23 April

Join Fiona Baker from Agriculture Victoria and Nicole Frost from Peak Pastures and Livestock for a discussion on making the most of pasture, crop and stock decisions for the coming months.

DATE: Wednesday 23 April

WHERE: Benambra Recreation Reserve

TIME: 11 am – 1 pm Lunch provided.

TOPICS:

- Maximising feed from crops and pasture
- to rebuild fodder reserves
- Protecting pastures in difficult seasons
- The golden rules of supplementary feeding
- Animal health – what to look out for.



COST: Free

REGISTRATION: Please register by clicking below
[Register link](#)
or with Keren Walker, to assist with catering.

MORE INFORMATION: Keren Walker, 0477 706 384
keren.walker@agriculture.vic.gov.au

The Farm Business Resilience Program is supporting farmers to build stronger, more productive agricultural businesses
Visit: agriculture.vic.gov.au/FBRP