



# OMEEO REGION NEWS SHEET



Wednesday 7 May 2025

**AN OMEOSHIRE LIONS CLUB PROJECT**

20 cents

*SERVING ENSAY, SWIFTS CREEK, OMEEO. BENAMBRA, DINNER PLAIN.*

### NEWSHEET ENQUIRIES:

Email: [newsheet@omeo.org.au](mailto:newsheet@omeo.org.au)  
Phone : 5159 1515 ..... [www.omeo.org.au](http://www.omeo.org.au)  
Post: P.O. Box 182 Omeo 3898

### Medical Services-Omeo Region

For **URGENT** Medical Care call **000**  
Omeo Medical Centre

Please Phone: **51 590 140**

To arrange an appointment

**Monday to Friday 8.00am—5.00pm**

**Pathology:** Collection Monday to Friday  
8.00 am—9.00am

*by appointment only*

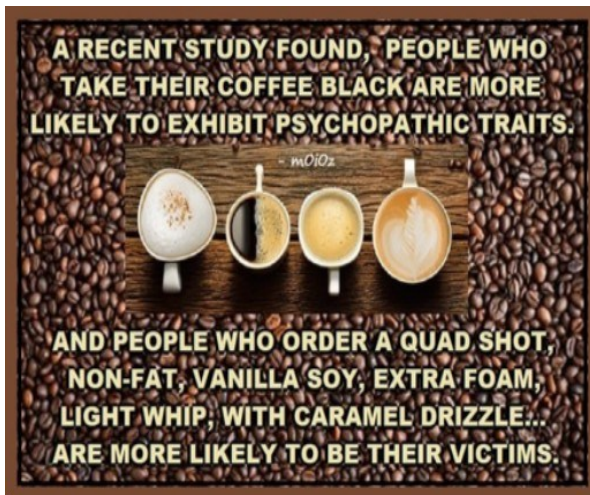
**OMEEO COMMUNITY HUB**

**LUCKY NUMBERS**

No 2 ... Simone Kelly

No 40 ... Tony Pendergast

**SNAPDRAGONS JOKE**



### WEATHER May 8 -14



## District Diary

**Wednesday 7th May**

**Omeo to Bright Bus..departs Omeo 8.30am return 3.30pm**  
Lego Club Omeo Library.....3.30pm-4.30pm

**Thursday 8th May**

Omeo Opportunity Shop Open..... 11.00am-3.00pm

**Friday 9th May**

**Omeo to Bright Bus...departs Omeo 8.30am return 3.30pm**

**Saturday 10th May**

AA.1<sup>st</sup> Saturday of month, CFA rooms .....2.00pm  
Omeo Opportunity Shop Open..... 11.00am-3.00p

**Sunday 11th May**

Anglican Church Omeo..... 11.00am  
Catholic Prayer Meeting Omeo  
Golf Comp ..... 12.00pm

**Monday 12th May**

**Omeo to Bright Bus depart...Omeo 8.30am return 3.30pm**  
The High Country Singers Omeo Shire Offices.....2-3.30 pm

**Tuesday 13th May**

Listen with Lorna live radio O.S.C.A.R. fm ... 12.00-2.00pm

NB . Never look down on anyone unless you are helping them up

Amicus



**Medical Centre**

**Charles Luiz  
&**

**Howard Goldenberg**

**Please note some days are via telehealth**

**Phone:5159 0140**



**Darren Chester**  
Federal Member for Gippsland



**Shopping  
Locally**

Creates Local Jobs  
#lovegippsland

1300 131 785

www.darrenchester.com



**OMEOPHARMACY**  
SPEAK TO YOUR LOCAL PHARMACIST

186 Day Avenue. Omeo. 3898

PH: 03 51591663 FAX: 03 5159 1686

EMAIL: omeopharmacy@gmail.com

DELIVERY AVAILABLE

R.E.C. 17886  
**MITCHELL**  
**Electrical Services**

**INDUSTRIAL — DOMESTIC  
ELECTRICAL MOTOR REPAIRS**

CONTACT: TOM MITCHELL

5157 3200 — 0428 573 205

*"From The Lakes To The Alps"*

**Skicom Mt Hotham**

CARPET/UPHOLSTERY/MATTRESS CLEANING SERVICE

Scott DeVries

0429 723 274

scottdevries2@icloud.com



STUBBORN DIRT, GRIT, STAINS, PET ODOUR, ALLERGENS... BE GONE!

TREE TRIMMING  
HEDGE TRIMMING  
GUTTER CLEANING  
STUMP GRINDING

FREE QUOTES

Ph: GARY 0427772634

email: garysmaintenance@gmail.com

STEEP  
MOWING + EDGING  
7Days



A Registered Nurse from Swifts Creek Bush Nursing Centre will be visiting Benambra Neighbourhood House periodically. Please call in advance to make a booking on Ph. 5150 2430.

Services available include blood pressure checks, blood sugar monitoring, cervical screening self-collection, telehealth, social emotional support, and assistance with accessing services.

All available free of charge.

Wound care and suturing – small fee  
Pathology collection available.

Bookings for Pathology are essential.

**Ph. 03 5150 2430**



**THANK YOU**



The Omeo District & Ensay/Swifts Creek RSL's would like to thank all those who helped at the ANZAC Day services and marches.





**Daily Services between  
Melbourne - Bairnsdale - Omeo**  
**Bairnsdale Depot** - Grinters Transport,  
 16 Lawless Street, Bairnsdale, 3875

**Melbourne Depot** - Vic Freight Specialists, 13B,  
 13-17 Progress Street, Dandenong, 3175

**Omeo Depot** – Omeo Welding & Engineering &  
 Equipment Hire, 87 Bilton Street, Omeo, 3898  
 Phone: (03) 5152 5778 Fax: (03) 5152 3329

Mobile: **0418 516 857**

Email: [admin@grinters.com.au](mailto:admin@grinters.com.au)

- ◆ Pallets . Parcels .
- ◆ Livestock . Hay .
- ◆ Machinery . Bulk
- ◆ General . Wool
- ◆ Refrigerated Freight . Farm Equipment

**Leaves 9.30am from Bairnsdale to Omeo**



**Jens and Maureen Hudson**

18 Great Alpine Road Lucknow 3875  
 Phone Maureen 0402 001 593  
 Jens **0402 006 268**

Many fabrics to choose from for all your  
 furnishing needs. Over thirty years in  
 Business and 76 years' experience in the  
 industry, between us we can help you.

Including car and motorbike seats

- Car roof linings replaced
- Cushions made to size
- Foam cut to size
- Toyota Land Cruiser seat foams



- |               |               |
|---------------|---------------|
| ➤ Groceries   | ➤ Gas Bottles |
| ➤ Meat        | ➤ Bottle Shop |
| ➤ Fruit & Veg | ➤ Post Office |

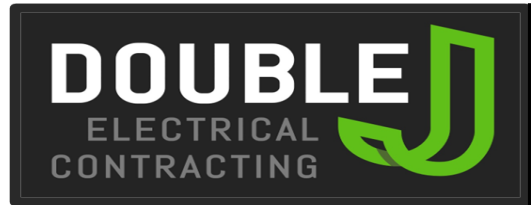
- Fuel ULP & DSL + Winter Mix
- Breakfast & Lunch Daily until 2pm
- Fish & Chips - Friday Nights 4pm-7pm
  - Eat In or Take Away
- Personalised Weekly Orders of Meat, Fruit &  
 Vegetables

Drop in and meet our awesome team to grab a  
 bite to eat or stock up on supplies for your  
 adventure around Sunny Benambra

**TRADING HOURS**

Weekdays 8am - 5:30pm  
 Weekends 9am - 5pm  
 Public Holidays 9am - 5pm

**03 5159 9209**



Bore pumps sales and servicing,  
 Mains and solar operated

TV Installation and servicing of both  
 Satellite & "Terry"

Generator - Sales/Hire/Installation/

Mains to Generator  
 changeover switches and inlets

Electrical Appliance Repairs/Maintenance

Electrical Installations  
 Industrial to domestic..

Competitive rates  
 and servicing the Omeo region

**Contact Jeremiah on 0418 909 978**

EAST GIPPSLAND  
SHIRE LIBRARIES



## LEGO CLUB 2025



**Junior LEGO enthusiasts are invited to attend our after- LEGO Club school sessions.**

The sessions incorporate freestyle activity and themed construction activities.

### Donations Welcome

The library will gladly accept donations of old or new LEGO brand pieces for our LEGO Club collection.

For more information, phone **51524225** or ask in person at the library about these **FREE** sessions.

**Omeo Service Centre**

3.30pm-4.30pm

Every Wednesday

Except School Holidays



*All Children must be accompanied by an adult*



## FARMGATE

Agribusiness Finance

### FARMER FIRST APPROACH

*"Your trusted partner in rural and agricultural finance"*

#### OUR SERVICES INCLUDE:

- Farm Loans
- Seasonal Finance
- Livestock Finance
- Equipment Finance
- Annual Bank Reviews
- Housing Loans

Cameron McPhan

Phone: **0439 388 808**

[cameron@farmgateagrifinance.com.au](mailto:cameron@farmgateagrifinance.com.au)



## ALL SCREENS GIPPSLAND

### SALES - SERVICE - REPAIRS

### GLASS & GLAZING –

WINDOW REPLACEMENTS

– SHOWER SCREENS – ROBE DOORS –

SECURITY DOORS – FLY SCREENS &  
MORE

Servicing - Ensay, Swift Creek, Omeo,  
Benambra & Dinner Plain

**OFFICE: 5152 6791**

JUSTIN: 0457 775 168

[emailsales@allscreensgippsland.com.au](mailto:emailsales@allscreensgippsland.com.au)

[www.allscreensgippsland.com.au](http://www.allscreensgippsland.com.au)

Mark Trafford **TRAKERS** 0428 264 480  
13 Jobling Street **TRANSPORT** [mark@tectronix.com.au](mailto:mark@tectronix.com.au)  
Bethanga Vic 3691  
ABN: 13 946 732 134 **&**  
**WATER CARTAGE**

Specialising in the following services

Potable Water Cartage

Transport of general freight, Agricultural goods,

Motorbikes, Quad bikes, Mowers

Small tractors, SXS's, Machinery parts,

Bagged grain and much more.

#### **Reasonable rates**

Truck equipped with 1,000 KG. tailgate loader

Full tarpaulin if required,

ability to load and unload goods

with 1.6 tonne all terrain pallet jack.

Truck capabilities: 6.tonne, 4x4

Tray size: 5.5 mtrs x 2.4 mtrs.

Flat top trailer 6.3 mtr x 2.5 mtr

Transporting weekly to Omeo and district from

Albury/Wodonga Corryong

Orders phoned or emailed by Tuesday 11 am

For delivery on Wednesdays

**Contact Mark for delivery charges on**

## Ensay Bush Nursing Centre

T. 03 5150 2416

F. 03 5150 2419

email: [ensaybnc@gha.net.au](mailto:ensaybnc@gha.net.au)



Open 9am until 3pm

5063 Great Alpine Road

Monday to Friday Ensay, VIC. 3895

**Nursing services:** No appointment required.

**Pathology:** Monday to Friday 9am until 10.15

No cost, No appointment required.

**Footcare:** Approximately 6 weeks, \$15.00 cost ring for an appointment.

**Walk and morning tea :** 1st Friday of each month

**Memberships:** \$80.00 family and 40.00 single due 31st of July each year, pro-rata payments accepted for new members.

Follow us on Facebook and on our website for events and employment opportunities.

**WEBPAGE**

<https://www.ensaybushnursing.com.au>

# NEW RUSH BREWHOUSE

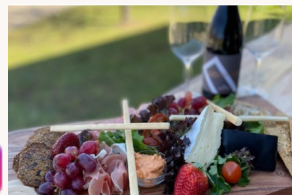
Phone :5159 1276

## Opening Hours

Friday from 5pm

Sunday Breakfast 8am 12pm

Sunday Lunch 12- 2pm



## SUBSCRIBERS PLEASE NOTE

[www.omeo.org.au/newssheet](http://www.omeo.org.au/newssheet)

Phone : 5159 1515

All articles for the newssheet to be in by **12.00 noon on the Monday** before publication.

**On sale Wednesday.**

Prices for Newssheet are as follows:

Full Page A4 \$40.00

1/2 Page \$20.00

1/4 Page \$10.00

1/8 Page \$5.00



**Please state what size you require & how long/dates you would like it advertised for**

## LYREBIRD PLANT NURSERY AND GARDEN SUPPLIES

**35 HANKSHAW'S HILL ROAD OMEO –**

**Last house on the left.**

**OPEN SATURDAY & SUNDAY 10-4PM**

**Or anytime by appointment.**



Our hot weather will be over soon enough so why not get a head start and have some plants on hand for Autumn planting, the perfect gardening Season! Visitors are welcome to wander through the Nursery garden and purchase stock. Established potted colour, Native shrubs, small trees, indoor plants and succulents.

A Range of bagged potting mix available.  
CASH ONLY OR DIRECT DEPOSIT

Please call Kell J

**0438 373 789**



## HALL STORIES.....

If you've got memories about activities that have happened in the Omeo Hall over the last 50 years we'd love to hear from you. On May 10th, Comedian Damien Cullinan, is presenting an evening of light entertainment & would love to chat with you to gather some information.

We'd also like to create a collage of photos or other memorabilia to display.

If you've got photos that we can take copies of that would be wonderful.

Please contact Ronda 0427191223 or drop into the Omeo Community Hub (we're open when the flag's out).

Should be a fun night so put it in your diary.

Football and netball in the afternoon & light entertainment in the evening - SAT NIGHT

IS FREE (Bookings essential) - QR code on posters around town



# JOSH IS GOING TO ENGLAND!

HE'LL BE FISHING FOR AUSTRALIA  
IN THE 2025 COMMONWEALTH  
FLY FISHING COMPETITION

*Wish him luck!*

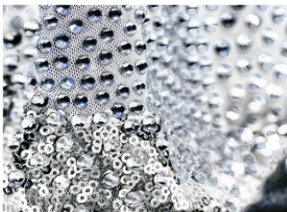
THE SHOP WILL BE CLOSED FROM  
SATURDAY 10<sup>TH</sup> OF MAY,  
RE-OPENING SATURDAY 31<sup>ST</sup> OF MAY

ONLINE ORDERS AVAILABLE  
*sorry for any inconvenience*

EAST GIPPSLAND  
SHIRE LIBRARIES

FREE  
BOOKINGS ESSENTIAL

## May Monthly Movie Screening



**Omeo Service Centre**  
To book; and for  
film information  
Ask at your library  
5152 4225

**Join us for a free screening  
of a selection of films!**

Experience a free movie screening in a comfortable and welcoming environment.

Enjoy light refreshments and the opportunity to connect over shared cinema experiences.

EAST GIPPSLAND  
SHIRE LIBRARIES

FREE | BOOKINGS ESSENTIAL

EAST GIPPSLAND  
SHIRE LIBRARIES

**Mental Health and  
Wellbeing for Seniors**

## Mental Health Support

Join us for this informative session with Mental Health and Wellbeing Local in East Gippsland!

Omeo Service Centre

Wednesday May 14

10.30am to 12.30pm



Come and learn:

- What is the Mental Health and Wellbeing Local?
- Who do they support?
- What supports are on offer?
- What can you expect when you ask for help?
- How can the Local support you, your friends, family, or neighbours?



Libraries  
Change Lives

mental health &  
wellbeing local  
Free support to your community



Re-elected Federal Member for Gippsland Darren Chester says he's humbled by the vote of confidence he received from locals in the federal election on Saturday.

As counting continued on Sunday, Mr. Chester received more than 53 per cent of the primary vote and a two-party-preferred result of 70 per cent, which was one of the biggest wins in Australia.

“It is incredibly humbling to receive such a strong vote of confidence from the community I love, and I am excited about the opportunity to continue representing Gippslanders in Federal Parliament,” Mr. Chester said.

“This result would not have been possible without the support of my incredible team, including my staff, family and volunteers, who help me every day in a job that is both demanding and complex.

“I just want to say a simple thank you to Gippslanders, and I promise to do my best to make sure our interests are well represented in Canberra.”

*Cheers Darren*





## OMEO GOLF RESULTS



Sunday 4/05/25	
18-hole Stableford-started 12pm.	
Points	Player
36	Daryl Shepherd
33	Steve Thomas
32	Pat McCormack
26	Dean Jobling
-	Pat McCormack
-	Dean Jobling
-	Pat McCormack

Daylight saving Twilight comps start again Wed 8<sup>th</sup> October 2025  
Sunday comps continue. 11.30 for 12noon hit-off...all welcome.



**John Raymond HAYWARD DCM Service No. 3237,  
Private, 29th Battalion**

A farmer, John Hayward was born at Cassilis when it was a thriving mining town, and of sufficient significance for his parents that they added it to his name. At the time of his enlistment, at the age of twenty, the family was living at Doctor's Flat, near Ensay.

John enlisted on 17 March 1916 and embarked aboard HMAT Berrima on 4 July for further training at the Larkhill camp in England. On 12 November 1916 he arrived in France, where he was taken on strength with the 29th Battalion and experienced the horrors of trench warfare. In John's case, this included recurring scabies, caused by the close confinement and poor hygiene the men endured in the trenches.

The 29th Battalion saw action in the Ypres sector during the European autumn of 1917, including a major battle at Polygon Wood that September. On 4 October 1917, John was appointed Lance Corporal.

On 29 July 1918, the 29th Battalion was involved in an attack at Morlancourt, near Amiens, where Lance Corporal Hayward was wounded in action. Despite receiving shrapnel wounds to his left foot and right leg, he continued fighting and was subsequently awarded the Distinguished Conduct Medal for his valour that day. The citation in the Commonwealth Gazette No. 31 of 4 March 1919 reads:

*For conspicuous gallantry and devotion to duty. During the attack and capture of an enemy trench system, this N.C.O. who was in charge of a Lewis gun team, was wounded in reaching the first objective. He continued to lead his section, and pushed on 100 yards beyond the final objective, when it was captured, to protect the work of consolidation. He was wounded a second time, but remained at his post and led his party against an enemy machine gun, which was taken, though he himself was wounded for the third time and had to be evacuated. His courage, endurance and brilliant leadership were an inspiration to the men under his command.*

John was transferred to the 5th Southern General Hospital at Portsmouth, then to the 3rd Australian Auxiliary Hospital on 18 October 1918. On 8 November he was awarded the Distinguished Conduct Medal. On 10 March 1919 he was invalided home on the Ulysses and discharged from the army on 17 April 1919.

John Hayward died on 25 September 1962 and is buried in the cemetery at Ensay



# EASTWOOD VETS

*Coming to Omeo*

**MAY 1ST  
JUNE 3RD**

**CALL 03 5152 4152 TO  
ARRANGE APPOINTMENT**



## *Small Animals*

We can see all forms of small animals,  
Including Consultations,  
Routine Vaccinations and worming,  
Lameness examinations and much more.



## *Equine Services*

Including Consultations, Lameness  
workups (with portable digital radiography),  
Reproductive management and  
Equine Dentistry



## *Livestock*

Being remote can make it hard to receive  
Veterinary attention quickly when needed.  
Having an Annual Farm Health Consult  
allows us to dispense medications for up to 12 months.  
We can also perform manual pregnancy diagnosis  
lameness exams and provide preventive health advice.

**CONTACT US** [reception@eastwoodvets.com.au](mailto:reception@eastwoodvets.com.au) **03 5152 4152**

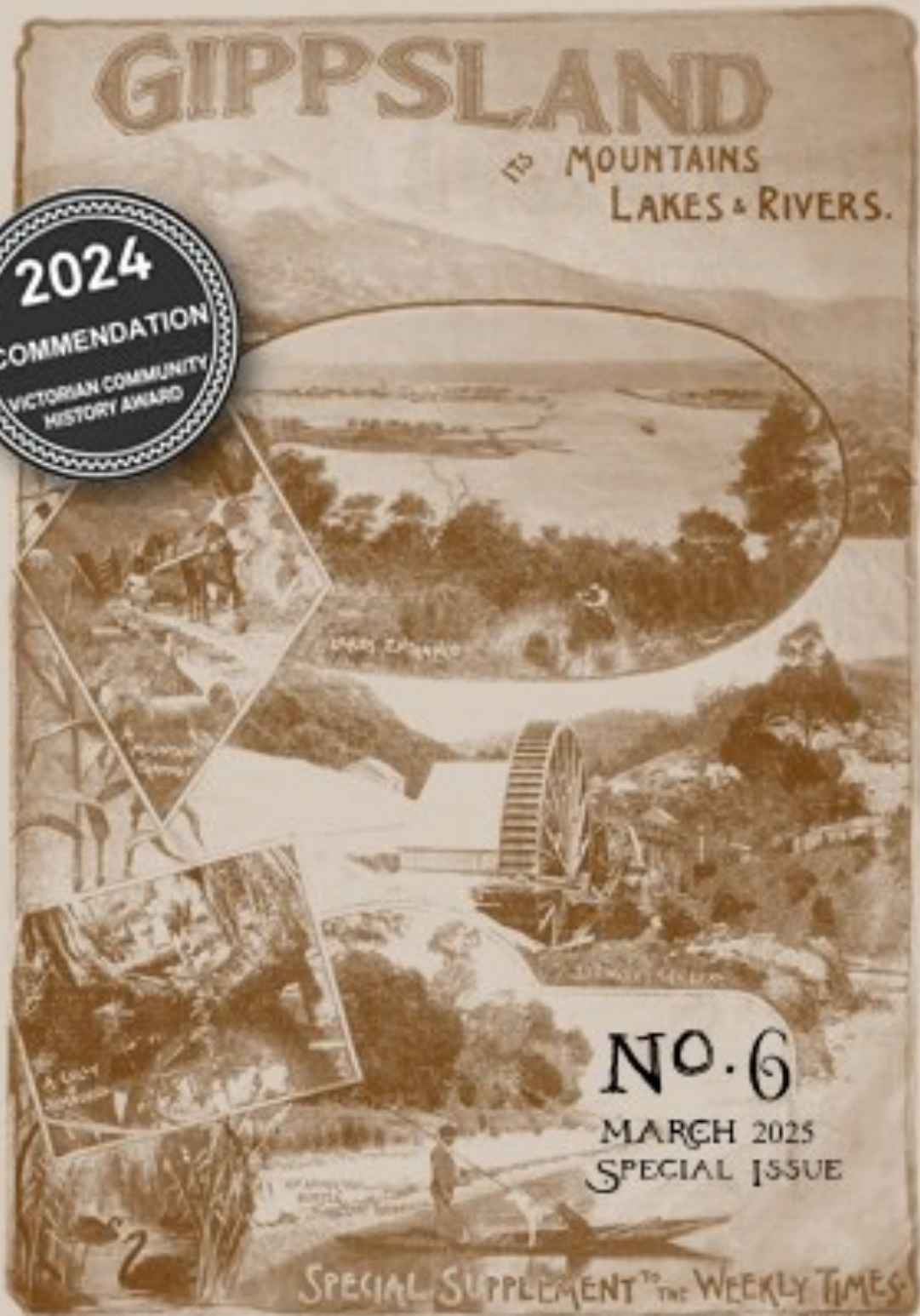
# THE STANDARD

HISTORY AND HERITAGE OF THE  
BENAMBRA : ENSAY : OMEO : SWIFTS CREEK DISTRICTS



## GIPPSLAND

TO MOUNTAINS  
LAKES & RIVERS.



NO. 6

MARCH 2025  
SPECIAL ISSUE

SPECIAL SUPPLEMENT TO THE WEEKLY TIMES